

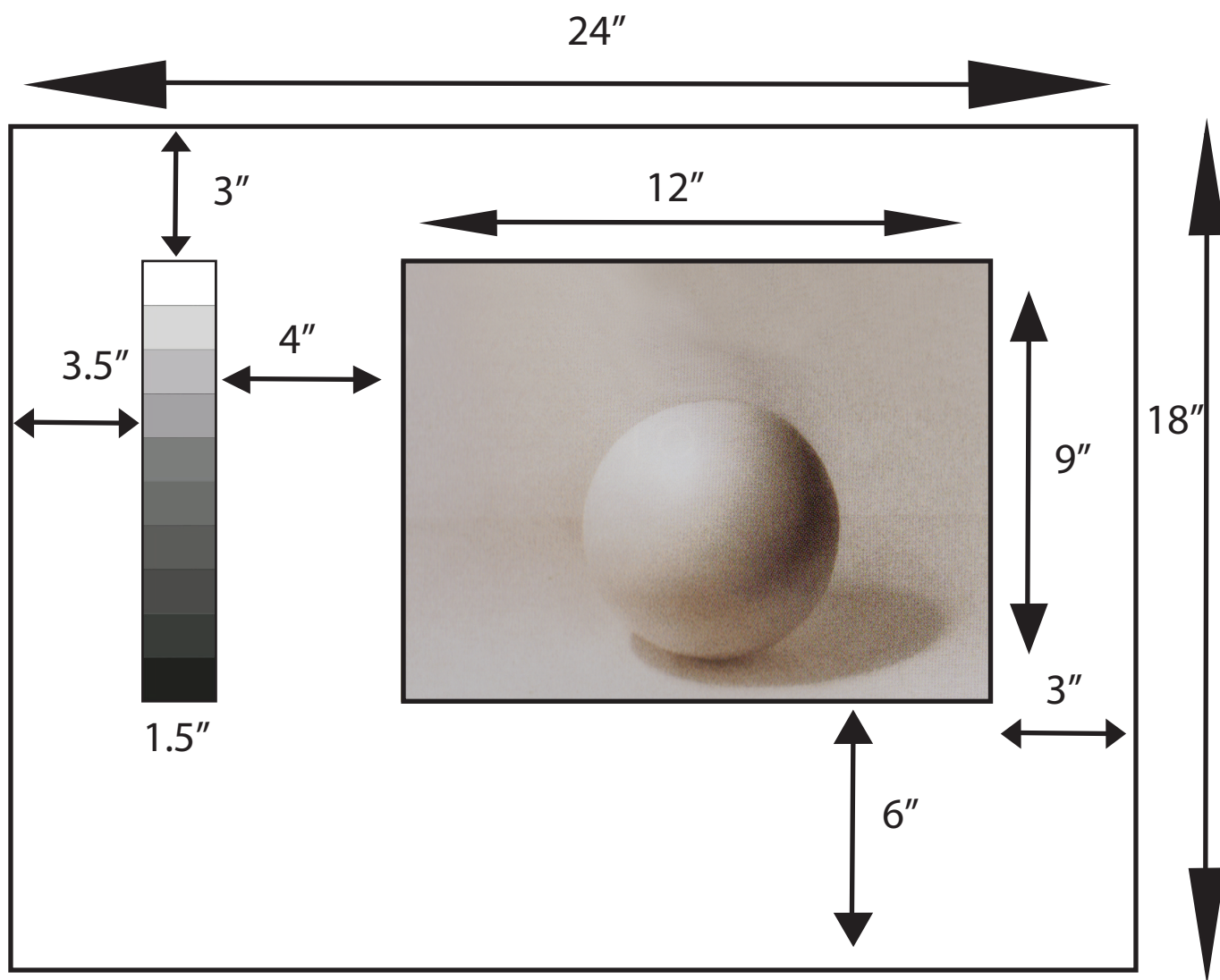
## ASSIGNMENT      *VALUE SCALE AND LIGHT LOGIC STUDY ASSIGNMENT*

**Medium: 2H, H, HB, 2B, 4B Graphite Pencils      Size: 18" x 24" Bristol**

On a sheet of smooth Bristol, create a nine (9) step Value Scale using a range of graphite pencils.

On the same sheet of Bristol draw a 9" x 12" rectangle and create a full value study of a sphere like object from direct observation.

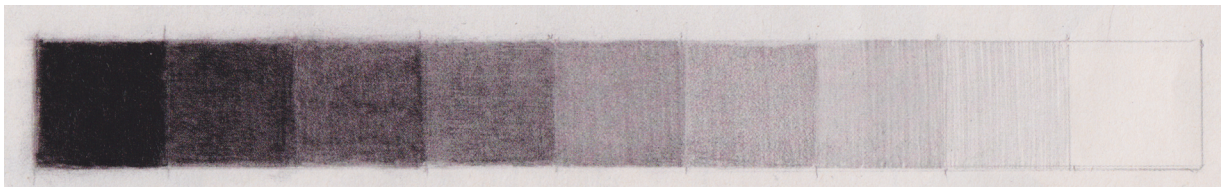
(The object could be an item such as a baseball or a pure white christmas ornament, an egg would be acceptable as well, just make sure that the object is **not** shiny like metal or glass)



# VALUE SCALE

---

**VALUE** - the relative degree of lightness and darkness within a color.  
Value is one of the three dimensions of color.



1st

7th

3rd

5th

2nd

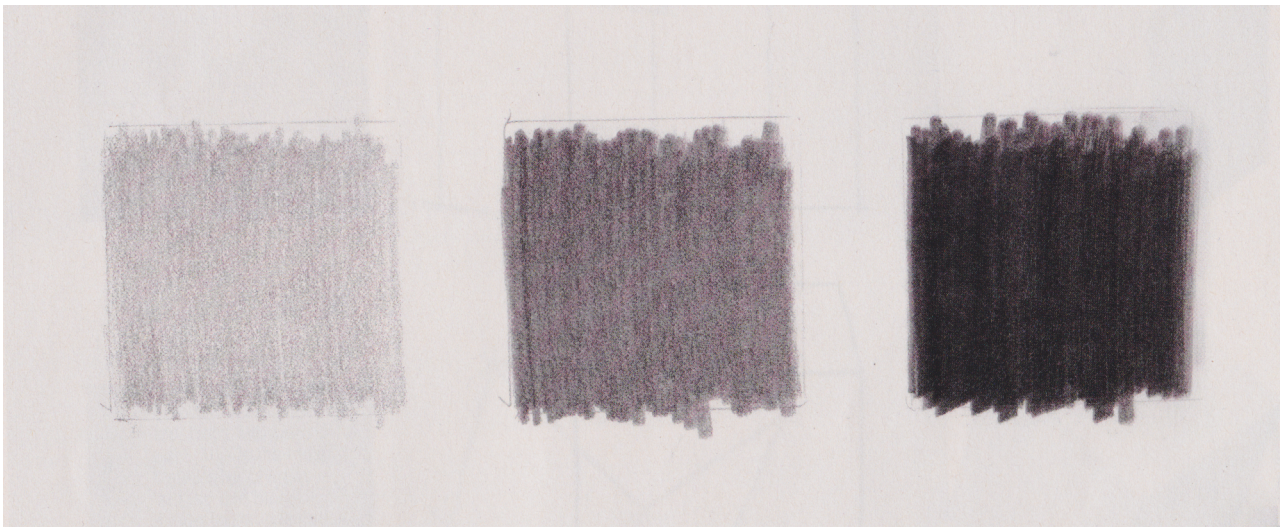
4th

6th

8th

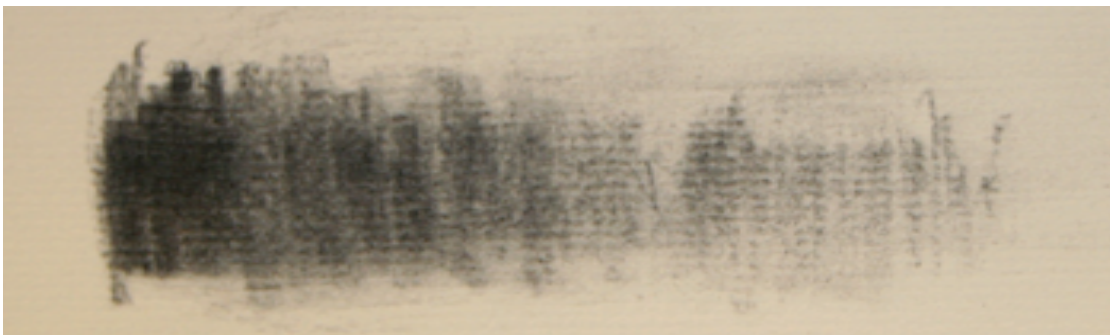
The end will be  
the white of the paper

Create the Value Scale in the order listed above



**YES**

Make sure the scale shows an accurate rate of change from value to value.  
Each square should also show an even tone, no sketchy, inconsistent tones  
within the squares.



**NO**

